



# Diesel Marine Engines

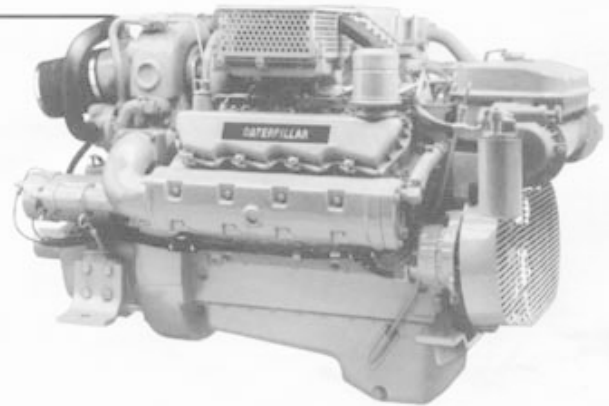
# 3208

210-435 hp @ 2800 rpm

## MARINE PROPULSION, HIGH PERFORMANCE SPECIFICATIONS

### V8, 4-Stroke-Cycle Diesel

Bore — mm (in) . . . . .	114.3	(4.5)
Stroke — mm (in) . . . . .	127.0	(5.0)
Displacement — L (cu in) . . . . .	10.4	(636)
Rotation (from flywheel end) . . . . .		ccw
Compression Ratio . . . . .	16.5:1	
435 hp . . . . .	15.5:1	
Capacity for Liquids — L (U.S. gal)		
Cooling System (engine only) . . . . .	56.8	(15.0)
Lube Oil System (refill) T, TA . . . . .	15.0	(4.0)
NA . . . . .	12.0	(3.2)
Oil Change Interval . . . . .	200 hrs	
Engine Weight, Net Dry (approx.) — kg (lb)		
Naturally Aspirated (NA) . . . . .	789	(1740)
Turbocharged (T) . . . . .	816	(1800)
Turbocharged-Aftercooled (TA) 375 hp . . . . .	853	(1880)
Turbocharged-Aftercooled (TA) 435 hp . . . . .	943	(2080)



435 hp Shown  
with Accessory Equipment

## PERFORMANCE DATA\*

### Naturally Aspirated

Rating Level	E	D
Rated rpm	2800	2800
Engine Power** @ rpm	157 kW (210 hp) 213 mhp	157 kW (210 hp) 213 mhp

rpm	2800	2400	1800	2800	2400	1800
kW	157	99	42	157	99	42
g/kW-hr	241	226	246	241	226	246
L/hr	45.0	26.5	12.2	45.0	26.5	12.2

bhp	210	132	56	210	132	56
lb/hp-hr	.396	.370	.403	.396	.370	.403
gal/hr	11.9	7.0	3.2	11.9	7.0	3.2

### Turbocharged

Rating Level	E	D
Rated rpm	2800	2800
Engine Power** @ rpm	239 kW (320 hp) 325 mhp	224 kW (300 hp) 304 mhp

rpm	2800	2400	2000	2800	2400	2000
kW	239	150	87	224	141	82
g/kW-hr	238	225	217	237	227	215
L/hr	67.9	40.3	22.5	63.2	38.2	20.9

bhp	320	201	117	300	189	109
lb/hp-hr	.390	.369	.356	.388	.373	.352
gal/hr	17.9	10.6	5.9	16.7	10.1	5.5

## RATING LEVEL DEFINITIONS (Continuous Power)

E — For use in pleasure craft with planing hulls, as well as for patrol, pilot and harbor master boats.      D — For use in patrol, customs, police and some fire boats.