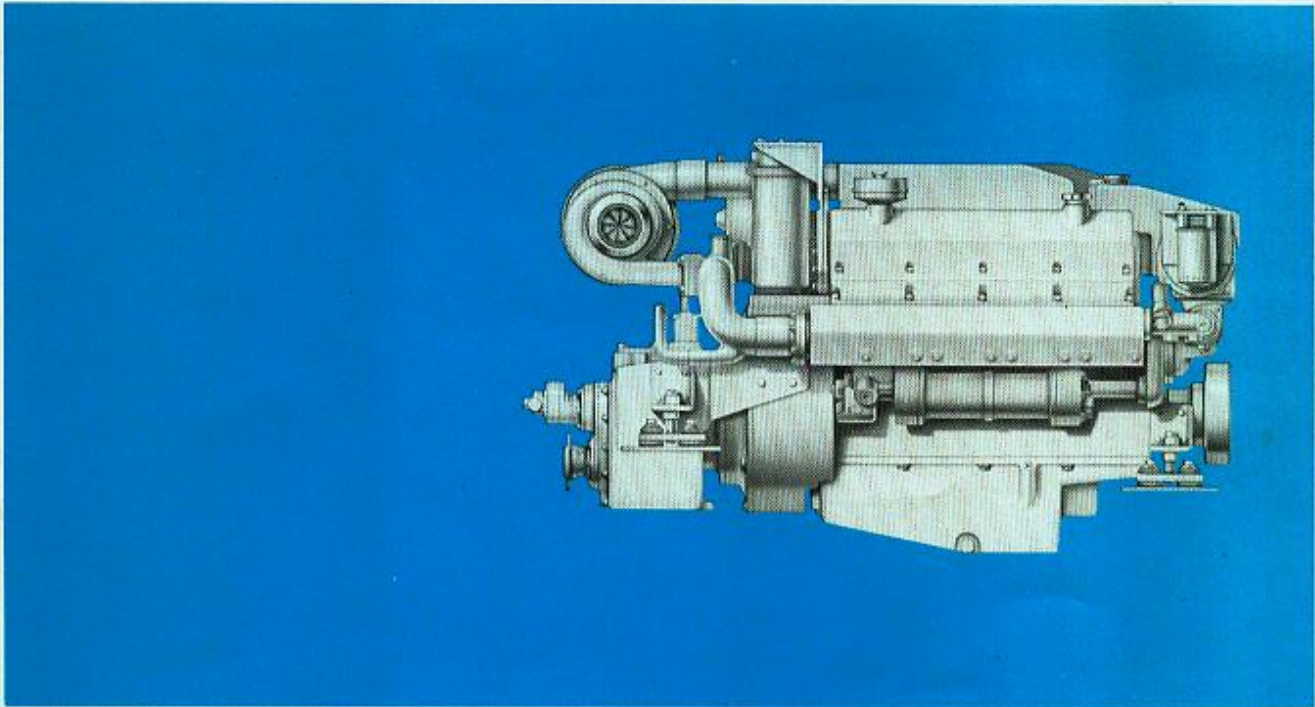


# Cummins Marine Diesel

# VT-903-M1



## Specifications

### Power Ratings

		<u>Metric</u>
Pleasure Boat . . . . .	340 bhp	254 kW
Governed RPM . . . . .	2800	2800
Light Duty Commercial . . . . .	295 bhp	220 kW
Governed RPM . . . . .	2600	2600
Continuous Duty . . . . .	255 bhp	190 kW
Governed RPM . . . . .	2300	2300
Number of Cylinders . . . . .	8	8
Bore and Stroke . . . . .	5½ x 4¾ in.	140 x 121 mm
Piston Displacement . . . . .	903 cu. in.	14.8 l
Aspiration . . . . .	Turbocharged	
Operating Cycles . . . . .	4	4
Oil Pan Capacity . . . . .	5 U.S. gals.	19 l
Coolant Capacity . . . . .	12 U.S. gals.	45.4 l
Net Weight, Dry† . . . . .	2950 lbs.	1340 kg

†With selected accessories and Capitol 4HE-10200 marine gear.

## Design Features

**Bearings:** Replaceable, precision type, steel backed inserts. Five main bearings, 3.75 in. (95 mm) diameter. Connecting rod bearings 3.125 in. (79 mm) diameter.

**Camshaft:** Single camshaft precisely controls valve and injector timing. Lobes are induction hardened for long life. Five replaceable precision type bearings 2.5 in. (63 mm) diameter.

**Camshaft Followers:** Induction hardened, roller type for long cam and follower life.

**Connecting Rods:** Drop forged, I-beam section 8.2 in. (208 mm) center to center length. Rifle drilled for pressure lubrication of piston pin. Rod is tapered on piston pin end to reduce unit pressures.

**Cooling System:** Gear driven centrifugal jacket water pump. Large volume water passages provide even flow of coolant around cylinder liners, valves, and injectors. Modulating by-pass thermostat regulates coolant temperature. Spin-on corrosion resistor checks rust and corrosion, controls acidity and removes impurities.

**Crankshaft:** Fully counterweighted high tensile strength steel forging with induction hardened fillets and journals.

**Cylinder Block:** Alloy cast iron with removable wet liners. Cross bolt support to main bearing cap provides extra strength and stability.

**Cylinder Heads:** Alloy cast iron. Each head serves four cylinders. Drilled fuel supply and return lines. Valve seats are replaceable corrosion resistant inserts. Valve guides and cross head guides are replaceable inserts.

**Cylinder Liners:** Replaceable wet liners dissipate heat faster than dry liners and are easily replaced without reboring the block.

*Design Features continued on back page*

