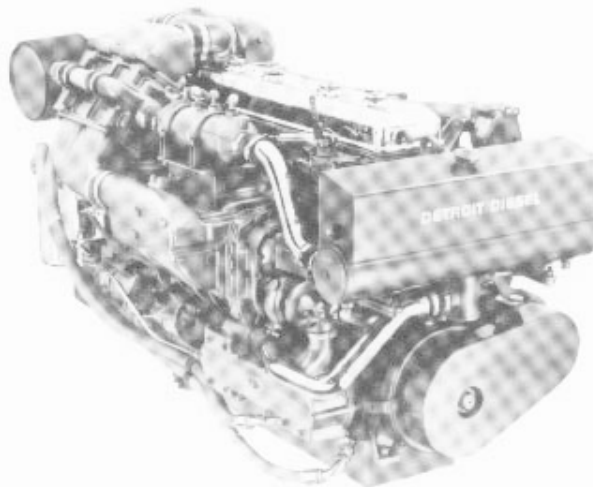


# DETROIT DIESEL Series 71

**Marine Model  
Pleasure Craft**

**6-71TI 485 BHP**



## General Specifications

Basic Engine	6-71TI
Model—Port	1062-7300
Starboard	1062-5300
Description	Turbocharged-Intercooled with Bypass Blower
Number of Cylinders	6
Bore and Stroke	4.25 in x 5.00 in (108mm x 127mm)
Displacement	426 cu in (6.9 liters)
Compression Ratio	17:1
Weight (dry)	2850 lbs (1293 kg)

## Rated Power Output—Maximum

Gross Power	485 BHP (362 kW) @ 2500 RPM
Net Power	465 SHP (347 kW) @ 2500 RPM

## Rated Power Output—Intermittent-Maximum

Gross Power	450 BHP (336 kW) @ 2500 RPM
Net Power	432 SHP (322 kW) @ 2500 RPM

## Equipment Specifications

Air Inlet Housing—Electric air shut down, manual optional
Alternator—12 volt, 66 amp, 90 amp optional
Blower—Maxi by-pass
Breather Collector System
Cam—Integral Advance Timing
Engine—Mounting Brackets for both engine and marine gears
Exhaust System—Fresh water - cooled manifolds and turbine housing
Governor—Variable speed
Heat Exchanger—Single pass tube and shell
Intercooler—Raw water
Marine Gear—Detroit Diesel MG507-2, MG507A-2 and MG5091
Turbocharger—High and low mounting options

Rating conditions: ISO 3046, SAE J1349, SAE J1228  
77°F (25°C) and 29.31 in. Hg. (99kPa) Barometer (Dry)

For a complete listing of standard and optional equipment,  
consult your authorized Detroit Diesel Corporation representative.

Photograph illustrates a typical marine engine

