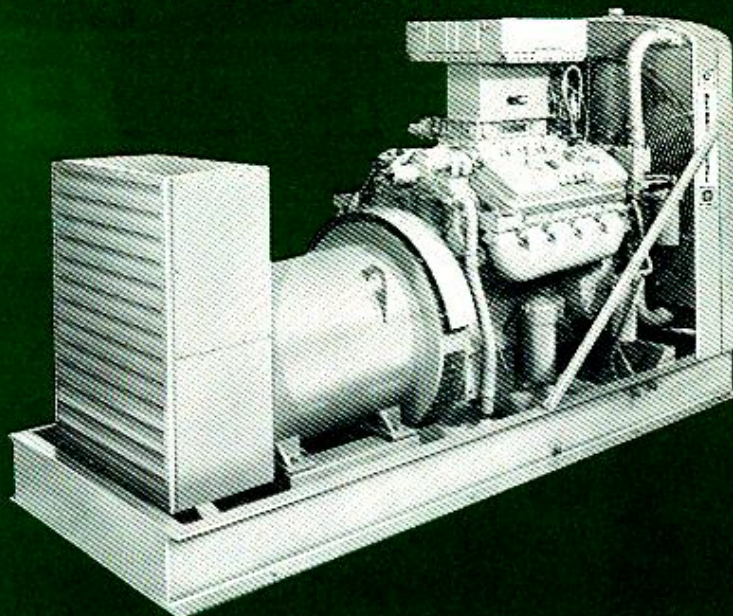


Detroit Diesel Allison

STANDBY GENERATOR SETS

8V-71N



STANDARD EQUIPMENT:

- Air Cleaner:** Oil Bath Type
- Automatic Voltage Regulator:** Regulation from no load to full load plus/minus 1%.
- Base:** Fabricated channel steel base.
- Electrical Equipment:** 24 volt starting motor.
- Engine Cooling Pump:** Centrifugal type, gear driven.
- Exhaust:** Exhaust Manifold and outlet flange.
- Fan:** Axial blower type with wire guard.
- Fuel Oil Filter:** Replaceable full flow, spin-on paper element type.
- Fuel Pump:** Gear type.
- Generator:** AC Brushless, class F insulation or better throughout; meets NEMA, IEEE, ANSI and British Standards.
- Governor:** Woodward hydraulic SG external vernier throttle control for engine speed adjustment.
- Harness:** Wiring harness, switches, terminal block and enclosure.
- Injectors:** Needle valve, cam operated unit injectors.
- Instrument Panel:** Includes lube oil pressure gauge, water temperature gauge and starter switch.
- Lifting Brackets:** Adequate eye brackets provided.
- Lube Oil Filter:** Replaceable full flow, spin-on paper element type.
- Lube Pump:** Gear type.
- Radiator:** Heavy duty type designed for 110°F (43.3°C) ambient.
- Shutdown:** Automatic for high water temperature, low oil pressure and overspeed.

Optional Equipment Available Upon Request.

SPECIFICATIONS:

	60 Hertz	50 Hertz
Standby Output*		
With Fan:		
kW at 0.8 PF	190	160
kVA	237.50	200.00
Without Fan:		
kW at 0.8 PF	197	165
kVA	246.25	206.25
Governed RPM	1800	1500
Engine Type	Two Cycle	Two Cycle
Number of Cylinders	8	8
Bore & Stroke in.	4.25 x 5	4.25 x 5
mm	107.95	107.95
	x 127	x 127
Piston Displacement cu. in.	568	568
litres	9.3	9.3
Compression Ratio	18.7:1	18.7:1
Net Weight (Dry) with Standard Equipment		
lbs.	5400	5400
kg	2449	2449
Shipping Volume cu. ft.	216	216
cu. m.	6.1	6.1

*The ratings are applicable to heavy duty diesel generator sets and are subject to normal varying load factors used in the event of a utility power failure. In this and other emergency applications, the generator set may be operated continuously with no deration except as required for ambient temperature and altitude until normal power is restored. The generator sets are rated at SAE conditions 65°F (29.4°C), 500 ft. (152.5 m), 29 in. Hg. barometer (dry) (98.19 kPa Hg). This rating conforms with DIN "B" 6270.

