

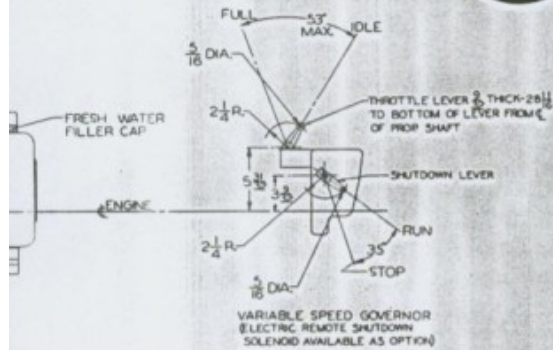


Detroit Diesel Allison

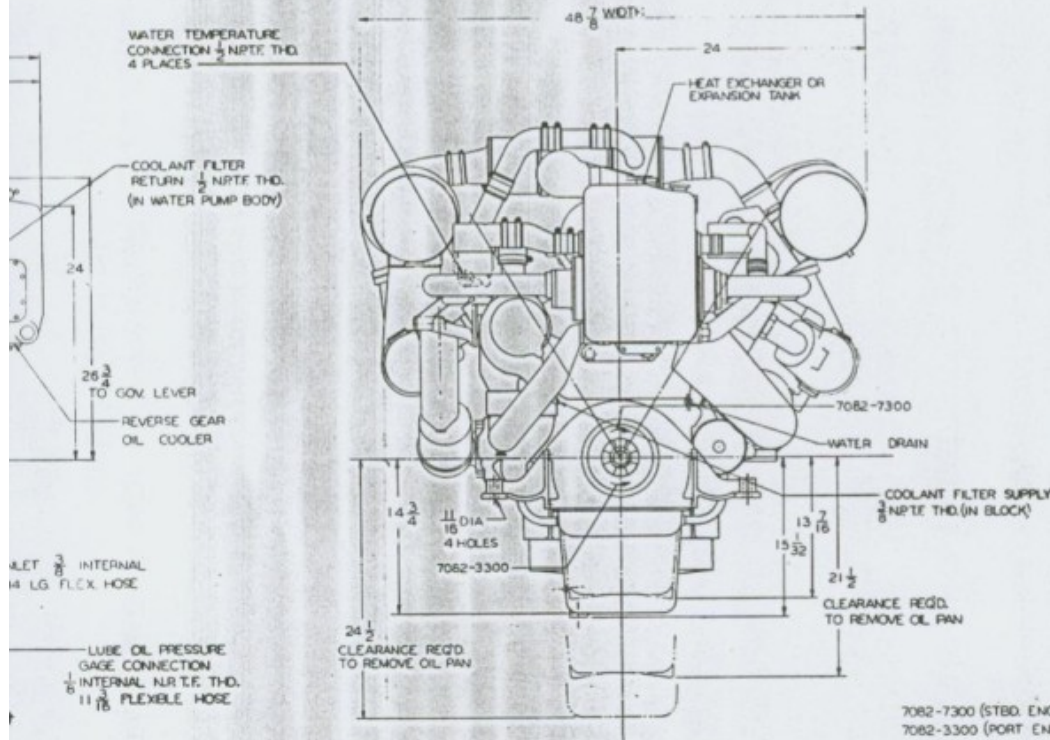
Division of General Motors Corporation

13400 WEST OUTER DRIVE DETROIT, MICHIGAN 48239

8N-71 TI 545



Printed stock tends to be dimensionally unstable due to stretching, shrinking, and folding. Therefore, dimensions which are not shown on this drawing should not be calculated by scaling.



70B2-7300 (STBD. ENG.)
70B2-3300 (PORT ENG.)

ITEMS SHOWN BY PHANTOM LINES ARE OPTIONAL EQUIPMENT

5143678	REV. 1
8-2-77	REV. 2
G. J. KELLY 11-8-77 56-421-5113	
INSTALLATION DRAWING BY-71 MACHINE SUBCHANGED	
5143678	R