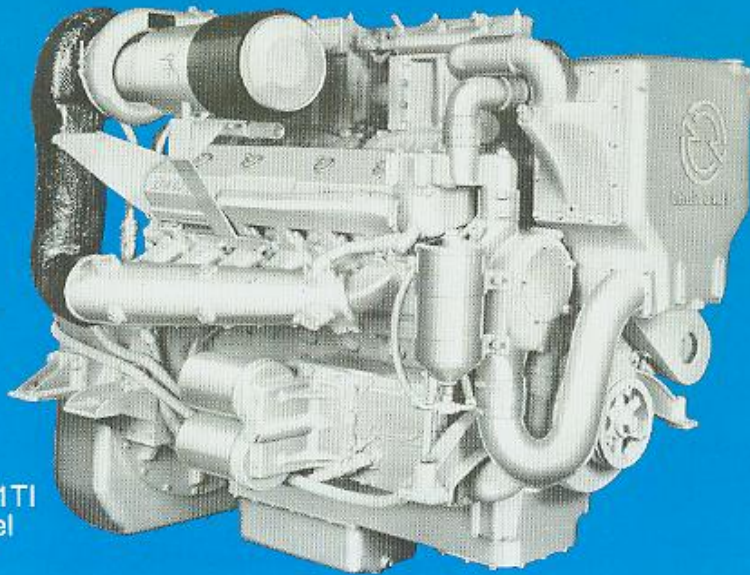


Detroit Diesel Engines

marine models

12V-71TI

675 hp

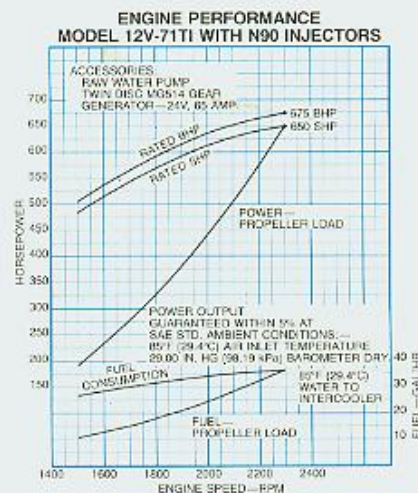


Typical 12V-71TI
Marine Model

specifications

Basic Engine

Model	
Port	7122-3300
Starboard	7122-7300
Engine Type	Two Cycle
Number of Cylinders	12
Bore and Stroke	4.25 in x 5 in (108 mm x 127 mm)
Displacement	568 cu in (9.32 litres)
Rated Gross Power:	
SAE: 85°F (29.4°C) and 29.00 in Hg (98.18 kPa) Bar. (Dry)	675 BHP (504 kW) @ 2300 RPM
Rated Net Power:	
SAE: 85°F (29.4°C) and 29.00 in Hg (98.18 kPa) Bar. (Dry)	650 SHP (485 kW) @ 2300 RPM
Compression Ratio	17 to 1
Net Weight (dry)	5200 lbs (2359 kg)



Rating Explanation

RATED BHP—Basic engine gross power

RATED SHP—Net power available at the marine gear output shaft.

PROPELLER LOAD—Indicates horsepower absorbed by a typical propeller and the corresponding fuel con-

sumption throughout the speed range.

MARINE ENGINE RATING—The use of the ratings i.e.: maximum, intermittent and continuous; varies with type of vessel in which the engine is installed. See your Detroit Diesel distributor for the rating that will apply to your vessel.

