



MARINE ENGINE

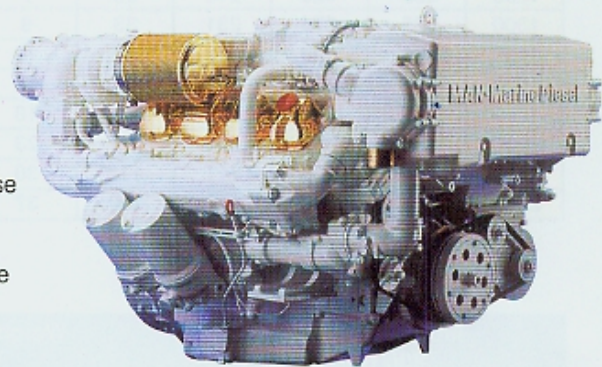
D2848LE4..

500 - 588 kW (680 - 800 hp)

LIGHT DUTY OPERATION

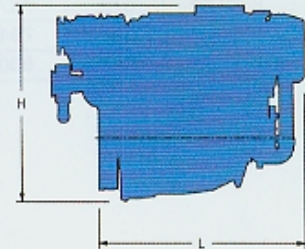
SPECIFICATIONS

Number of Cylinders	8
Configuration	90° V
Fuel	Diesel
Bore - mm (in)	128 (5.04)
Stroke - mm (in)	142 (5.59)
Displacement - L (in ³)	14.62 (892)
Rotation (from flywheel end)	Counterclockwise
Compression Ratio	13.5 : 1
Governor	Mechanical
Engine Weight, Net Dry (approx.)	See reverse side
Capacity for Liquids - L (U.S. gal)	
Cooling System (engine only)	63-81 (16-21)
Lube Oil System (deep sump) max	18 (4.8)
Oil Change Interval (guideline)	200 hours
Rated RPM	2300



DIMENSION GUIDELINES

Model	L		H		W	
	mm	in	mm	in	mm	in
401	1174	46	990	39	1216	47.9
403	1174	46	1015	40	1230	48.4



DEFINITION OF DUTY AND APPLICATIONS

Type of operation

Operating hours per year	up to 2000
Percentage of time at full load	5 to 15%
Average load application	25 to 50%
Particular operating conditions	rated rpm must be achieved at WOT (minimum)
Typical gearbox ratio	2.1

Typical applications - Yachts

- Light-weight fishing boats
- Fast patrol boats for Customs, Coast Guard, Police, Port Authorities
- Fast boats in emergency service
- Bow thrusters
- Fire pumps