



MARINE ENGINE

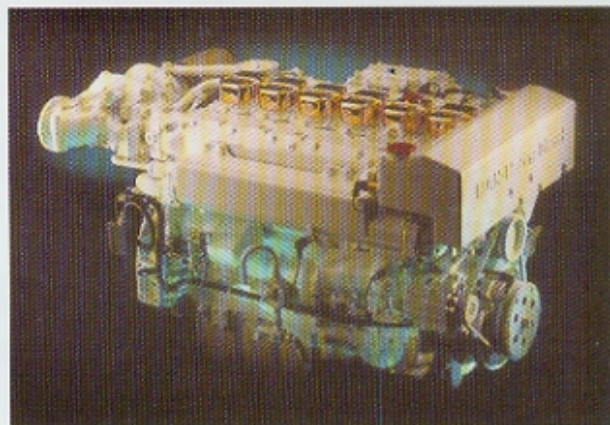
D2876LE401

515 kW (700 hp)

LIGHT DUTY OPERATION

SPECIFICATIONS

Number of Cylinders	6
Configuration	Inline
Fuel	Diesel
Bore - mm (in)	128 (5.04)
Stroke - mm (in)	166 (6.54)
Displacement - L (in ³)	12.8 (781)
Rotation (from flywheel end)	Counterclockwise
Compression Ratio	15.5 : 1
Governor	Electronic
Engine Weight, Net Dry (approx.)	See reverse side
Capacity for Liquids - L (U.S. gal)	
Cooling System (engine only)	58 (15)
Lube Oil System (deep sump) max	18 (4.8)
Oil Change Interval (guideline)	200 hours
Rated RPM	2200



DIMENSION GUIDELINES

L		H		W	
mm	in	mm	in	mm	in
1320	52.0	1070	42.1	869	34.2



DEFINITION OF DUTY AND APPLICATIONS

Kind of operation

Operating hours per year	up to 1000
Percentage of time at full load	up to 20%
Average load application	up to 50%
Particular operating conditions	rated rpm must be achieved at WOT (minimum)
Typical gearbox ratio	2:1

Typical applications - Yachts

- Light-weight fishing boats
- Fast patrol boats for Customs, Coast Guard, Police, Port Authorities
- Fast boats in emergency service
- Bow thrusters
- Fire pumps