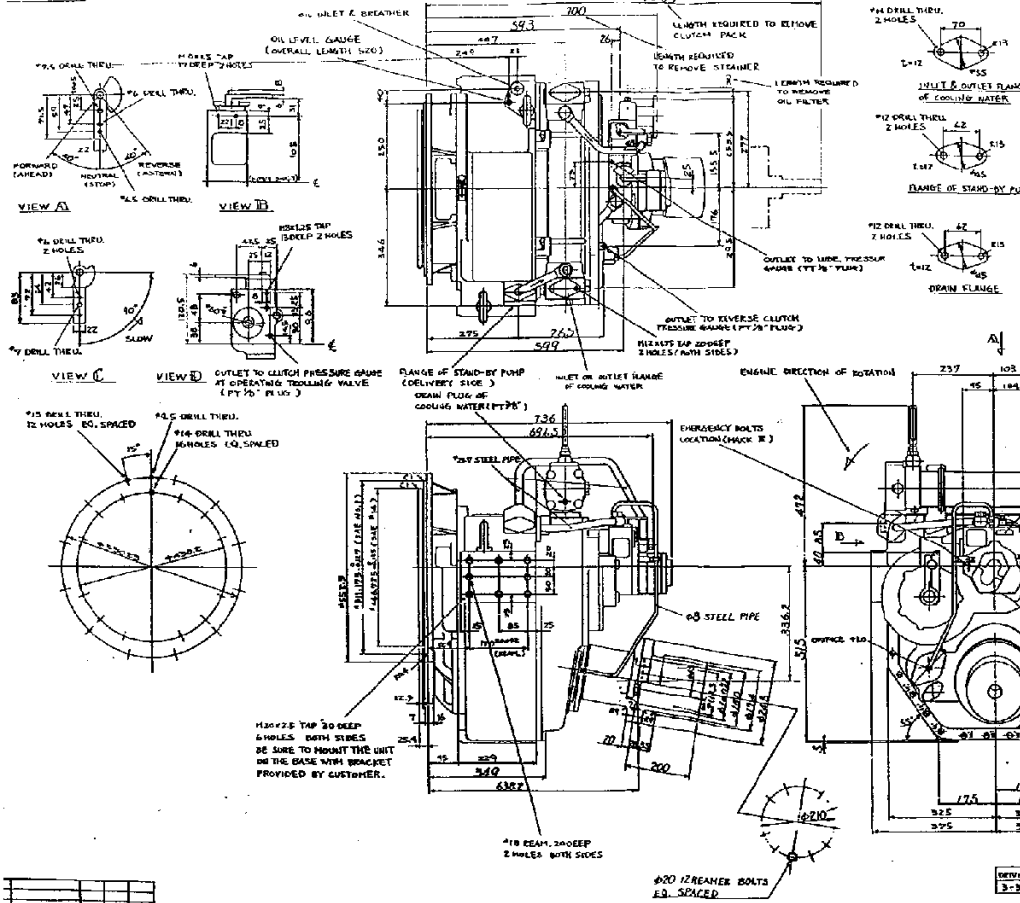
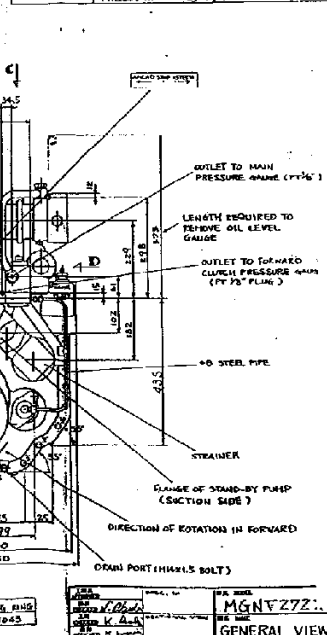


566-L



MODEL MGNV272X-1 MARINE GEAR SPECIFICATION	
GEAR RATIO	1.47 2.27 3.43
TOTAL HEIGHT	APPROX. 450 MM (OVRT)
OIL CAPACITY	APPROX. 160 L
OIL PRESSURE	CLUTCH ID = 21 MPa @ RATED SPEED LUB. ID = 0.5 MPa @ RATED SPEED
OR VISCOSSITY	SAE #30
OIL CHANGE INTERVAL	THE FIRST 100 HOURS OF INITIAL OPERATION AND EVERY 1000 HOURS THEREAFTER
SHIFTING LIMITS	SHIFT TO FORWARD OR REVERSE FROM NEUTRAL AND ACROSS NEUTRAL UNDER 50% OF THE RATED ENGINE SPEED
OPERATING TORQUE OF SHIFTING LEVER	UNDER 30 N·m
WATER FLOW	50 L/min
HEADS OF COOLING WATER UNDER	3.5 MPa
COOLING AREA	0.1 m ²
CAPACITY	30 L/min @ 1000 RPM
PRESSURE	21 MPa



DATE	REVISED	BY	APPROVED
1970.10.20	1	K. A. A.	M. G. N. V. 272
GENERAL VIEW		7-33956	

NO.	DESCRIPTION	DATE	BY