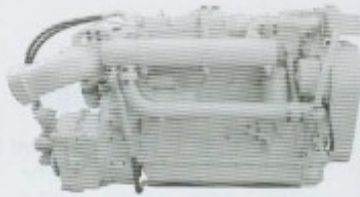


6BTA5.9-M

Main Propulsion



General Specifications

Configuration	In-line 6 cylinder, 4 stroke	
Aspiration	Turbocharged/Aftercooled	
Displacement	5.9 liters	359.0 in ³
Bore & Stroke	102x120 mm	4.02x4.72 in
Compression Ratio	15.3:1-15.5:1	
Rotation	Counterclockwise facing flywheel	

Engine Features and Available Options

- Keel Cooled or Heat Exchanger configurations
- Standard capacity (14 L [3.6 g]) or high capacity (31L [8.1 g]) oil pan
- SAE 3 Flywheel Housing
- 292 mm (11.5 in) clutch adaptation
- Jacket Water or Sea Water aftercooled
- Marine Classification Society Approval*
- Emissions certification available from the U.S. EPA and Lloyd's Register of Shipping.

* Check with your local Cummins professional for a complete listing of current approvals for this engine.

Commercial Ratings

(JW) Jacket Water Aftercooled
(SW) Sea Water Aftercooled

kW	BHP	RPM	Fuel Cons		Rating
			L/hr	g/hr	
168	225	2500	44.3	11.7	MCD (JW)
194	260	2600	53.7	14.2	INT (JW)
<i>209</i>	<i>280</i>	<i>2600</i>	<i>54.1</i>	<i>14.3</i>	<i>MCD (SW)</i>
<i>235</i>	<i>315</i>	<i>2800</i>	<i>62.8</i>	<i>16.6</i>	<i>INT (SW)</i>

Recreational Ratings

kW	HP*	RPM	Fuel Cons		Rating
			L/hr	g/hr	
194	270	2600	54.5	14.4	HO (JW)
<i>235</i>	<i>330</i>	<i>2800</i>	<i>63.7</i>	<i>16.8</i>	<i>HO (SW)</i>
<i>265</i>	<i>370</i>	<i>3000</i>	<i>72.9</i>	<i>19.3</i>	<i>HO (SW)</i>

* Metric Horsepower

Italicized ratings are IMO emissions compliant.

General Engine Dimensions

Dimensions may vary based on selected engine configuration.

	JW		SW	
	mm	(in)	mm	(in)
Length	1033	(41)	1003	(40)
Width	774	(30)	827	(32)
Height	827	(32)	774	(30)
Weight	470	(1035)	581	(1280)