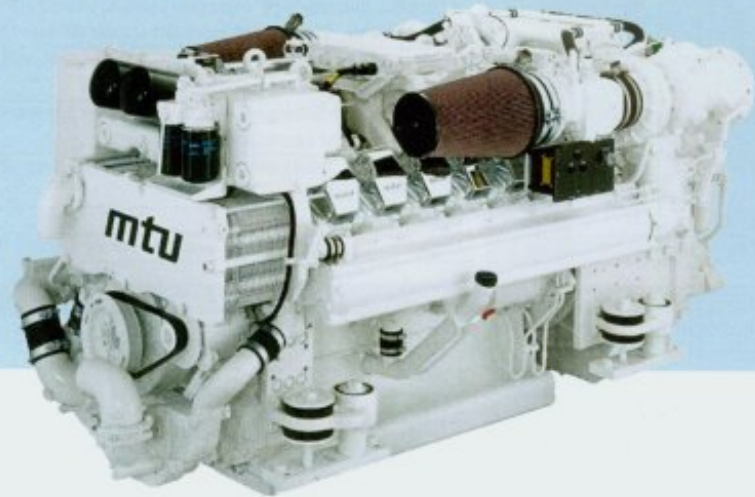


Diesel Engine Series 2000 M91

for Fast Vessels

with Low Load Factors (1DS)



Typical applications:

Fast Yachts, Fast Patrol Boats,
Police Craft and Fire-Fighting
Vessels

Engine Model		12V 2000 M91	16V 2000 M91
Rated power ICFN	kW (bhp)	1119 (1500)	1492 (2000)
Speed (speed margin)	rpm	2350 (+50)	2350 (+50)
No. of cylinders		12	16
Bore/stroke	mm (in)	130/150 (5.1/5.9)	130/150 (5.1/5.9)
Displacement, total	l (cu in)	23.9 (1458)	31.9 (1947)
Flywheel housing		SAE 1	SAE 0
Gearbox model		ZF 2050 A i = 1.2 - 2.5	ZF 2555 i = 1.5 - 2.7

Performance and Fuel Consumption ¹⁾		12V 2000 M91			16V 2000 M91		
Speed	rpm	2350	1800	1200	2350	1800	1200
Maximum power	kW	1119	940	500	1492	1250	790
	bhp	1500	1261	671	2000	1676	1059
Power on propeller curve	kW	1119	500	150	1492	670	200
	bhp	1500	671	201	2000	898	268
Fuel consumption on propeller curve	g/kWh	222	202	210	223	206	216
	l/h	299.3	121.7	38.0	400.7	166.3	52.1
	gal/h	79.1	32.2	10.0	106.0	44.0	13.8

¹⁾ Tolerance +5% per ISO 3046, Diesel fuel to DIN EN 590 with a min L.H.V. of 42800kJ/kg (18390 BTU/lb)



DaimlerChrysler Off-Highway